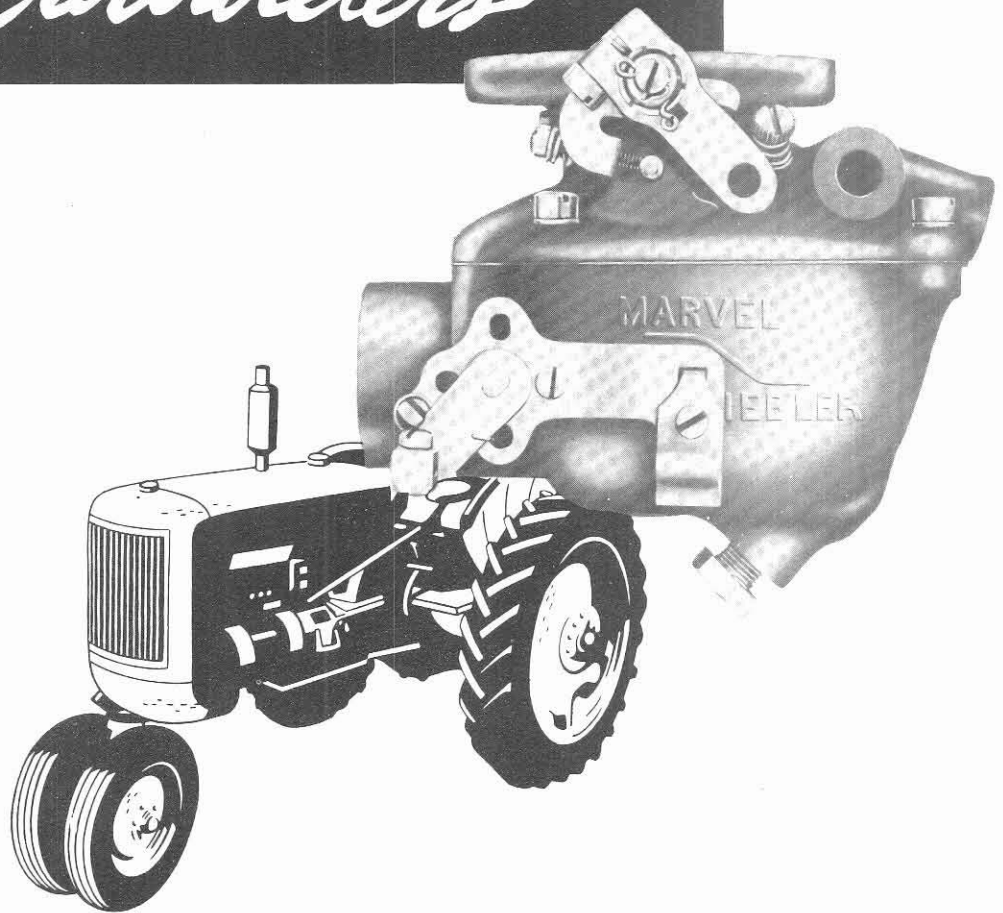


SECTION III  
**FERGUSON ENGINES**  
TSX SERIES

# TRACTOR

## *Carbureters*



**MARVEL-SCHEBLER PRODUCTS DIVISION,**  
BORG-WARNER CORPORATION

DECATUR, ILLINOIS, U. S. A.

# Warranty

Marvel-Schebler Products Division, Borg-Warner Corporation, warrant its carbureters against defects in material and workmanship for a period of ninety days. Defective merchandise will be replaced without charge but labor charges incurred in the removal, disassembly or reinstallation of such products will not be allowed. No merchandise can be returned without written permission from the factory, transportation charges must be prepaid. The factory shall be the sole judge of defects in products returned.

A ten per cent handling charge will be made for all merchandise returned that is not defective. All prices are subject to change without notice, and we reserve the right to limit quantities and to make partial shipments unless specifically instructed otherwise. The obligation of the company under this warranty is limited to replacing at the factory, any complete units or parts thereof which shall be returned and which our examination shall disclose to have been defective.

## Introduction...

This section of the master manual is an individual parts catalog of all service parts for Marvel-Schebler carbureters listed on the identification charts. The catalog is broken down into groups of fifteen carbureters; each group containing an identification chart, an exploded drawing of a composite carbureter, and a parts list. Each part in the illustration bears a reference number which keys together the illustration and parts list.

NOTE: The illustration does not represent any specific carbureter within a series, but is typical of all of them. All parts that look different are shown adjacent to the part of the basic carbureter that they replace.

### TO USE THE CATALOG

- (1) Locate the group which contains the carbureter in question by referring to the identification charts.
- (2) Visually locate the part desired in the exploded drawing and note its reference number.
- (3) Turn to the parts list opposite the reference number of the part for its complete part name and part number.

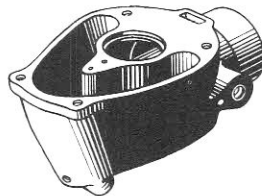
**FERGUSON — TRACTOR CARBURETERS**

ISSUED JULY 1952

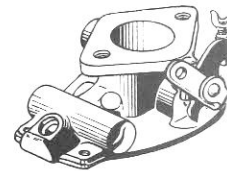
Model Application	Engine	Carburetor Number	Carburetor Part No.	Fuel	Superseded by	Customer Part No.	Repair Kit No.	Gasket Kit No.	Float Valve & Seat Assy
T0-20 Tractor .....	Continental Z-120	TSX-248	10-3022	Gasoline	TSX-361A	.....	286-786	16-592	233-536
T0-20 Distillate Tractor .....	Continental ZA-120	TSX-272	10-3235	Distillate	.....	TOD-9510	286-955	16-634	233-536
T0-20 Tractor .....	Continental ZA-120	TSX-312	10-3122	Gasoline	TSX-361A	TO-9510	286-853	16-592	233-536
T0-20 Tractor .....	Continental ZA-120	TSX-361	10-3270	Gasoline	TSX-361A	TO-9510-1	286-853	16-592	233-536
T0-20 Tractor .....	Continental Z-120	TSX-361A	10-3352	Gasoline	.....	TO-9510-1	286-853	16-592	233-536
T0-30 Tractor .....	Continental Z-129	TSX-458	10-3531	Gasoline	.....	TO-9510-B1	286-975	16-634	233-536

◆ The repair kit includes the throttle shaft, float valve and seat assembly, and the gasket kit.

§ The flange gasket can be supplied separately. Specify the carburetor number when ordering.

**BASIC SUBASSEMBLIES****CARBURETER BODY ASSY**

Carburetor Number	Part Number
TSX-248 .....	10-3025
TSX-272 .....	10-3236
TSX-312 .....	10-3123
TSX-361 .....	10-3271
TSX-361A .....	10-3353
TSX-458 .....	10-3532

**THROTTLE BODY & SHAFT ASSY**

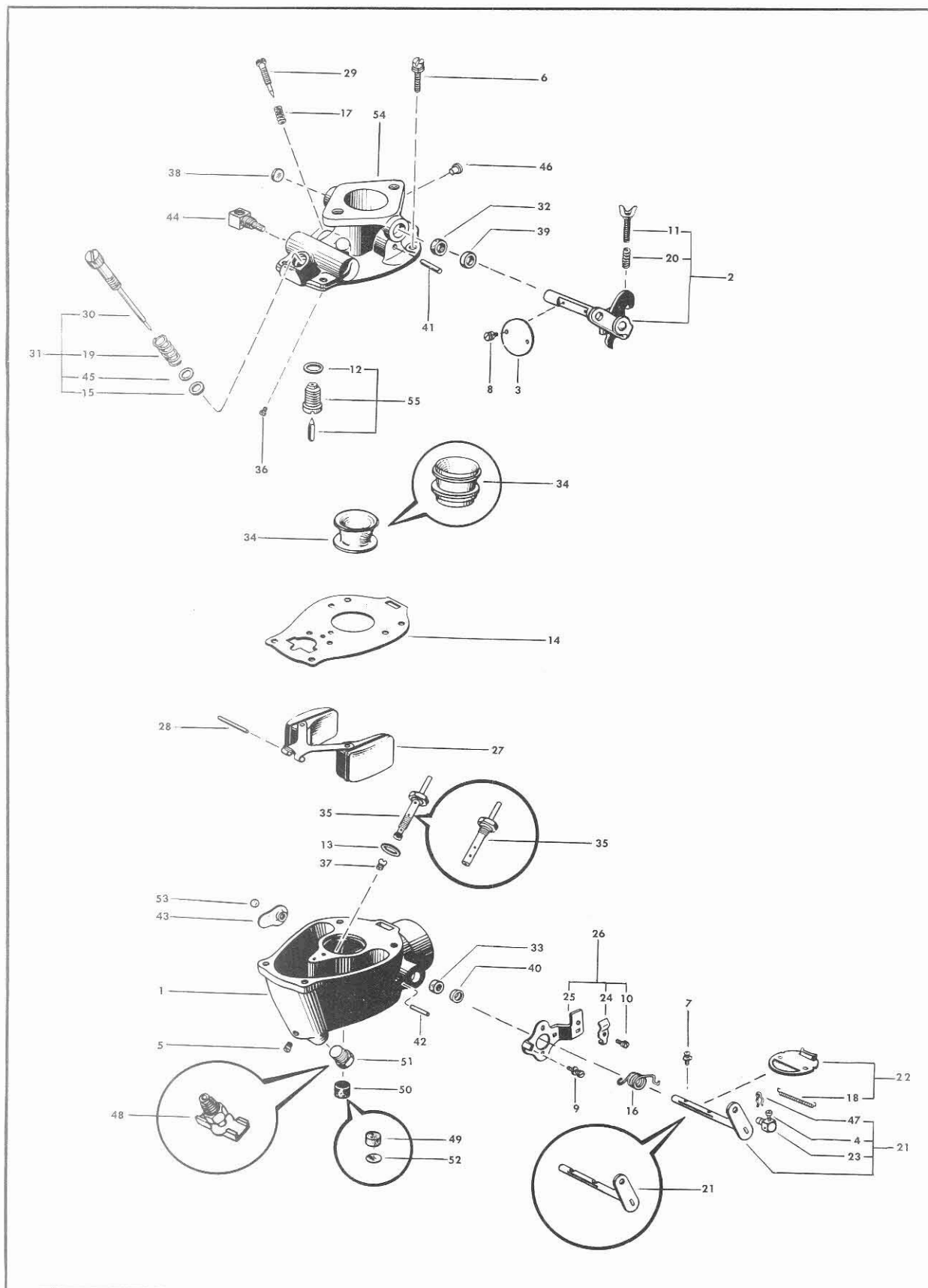
Carburetor Number	Part Number
TSX-248 .....	227-1077
TSX-272 .....	227-1186
TSX-312 .....	227-1077
TSX-361 .....	227-1167
TSX-361A .....	227-1210
TSX-458 .....	227-1267

**FERGUSON**

Ref. No.	Part Name	Part No.	TSX-248	TSX-272	TSX-312	TSX-361	TSX-361A	TSX-458
1	Body Assy — Carburetor .....	(See Basic Subassy)	1	1	1	1	1	1
2	Shaft, Stop & Lever Assy — Throttle .....	13-1011	1	1	1	1	1	1
3	Valve — Throttle (20°) .....	14-169	1	1	1	1	1	1
4	Screw — Choke Swivel (No. 8-32 x 5/16) .....	15-285	1	—	—	—	—	—
5	Screw — Drill Plug, Nozzle Hole (No. 8-32) .....	15-409	1	—	—	1	1	1
6	Screw & Lock Washer Assy — Throttle Body to Bowl (No. 12-24 x 5/8) .....	15-A82	4	4	4	4	4	4
7	Screw & Lock Washer Assy — Choke Valve (No. 4-40 x 1/4) .....	15-A91	2	2	2	2	2	2
8	Screw & Lock Washer Assy — Throttle Valve (No. 4-40 x 1/4) .....	15-A91	2	2	2	2	2	2
9	Screw & Lock Washer Assy — Choke Bracket to Body (No. 8-32 x 3/8) .....	15-A93	1	—	—	—	—	—
10	Screw & Lock Washer Assy — Choke Bracket (No. 8-32 x 5/16) .....	15-A99	1	—	—	—	—	—
11	Screw — Throttle Stop (No. 8-32 x 1) .....	15-A108	1	1	1	1	1	1
12	Gasket — Float Valve Seat .....	16-4	1	1	1	1	1	1
13	Gasket — Main Nozzle .....	16-28	—	1	—	—	—	1
		16-449	1	—	1	1	1	—

# FERGUSON — TRACTOR

TSX-248 to TSX-458



Marvel-Schebler Products Division, Borg-Warner Corporation, Decatur, Illinois, U. S. A.

FERGUSON			TSX-248	TSX-272	TSX-312	TSX-361	TSX-361A	TSX-458
Ref. No.	Part Name	Part No.						
14	Gasket — Throttle Body to Bowl .....	16-80 .....	1	1	1	1	1	1
15	Gasket — Power Adjusting Needle .....	16-491 .....	1	1	1	1	1	1
16	Spring — Choke Return .....	24-153 .....	1	—	—	—	—	—
		24-188 .....	—	1	1	1	1	1
17	Spring — Idle Needle .....	24-340 .....	1	1	1	1	1	1
18	Spring — Choke Valve Flapper .....	24-425 .....	1	1	1	1	1	1
19	Spring — Power Adjusting Needle .....	24-A1 .....	1	1	1	1	1	1
20	Spring — Throttle Stop Screw .....	24-A153 .....	1	1	1	1	1	1
21	Shaft & Lever Assy — Choke .....	26-662 .....	1	—	—	—	—	—
		26-735 .....	—	1	1	1	1	1
22	Valve Assy — Choke .....	27-539 .....	1	1	1	1	1	1
23	Swivel — Choke Lever .....	28-49 .....	1	—	—	—	—	—
24	Clip — Choke Bracket .....	29-81 .....	1	—	—	—	—	—
25	Bracket — Choke .....	29-86 .....	1	—	—	—	—	—
26	Bracket Assy — Choke .....	29-520 .....	1	—	—	—	—	—
27	Float & Lever Assy .....	30-600 .....	1	1	1	1	1	1
28	Shaft — Float Lever .....	32-27 .....	1	1	1	1	1	1
29	Needle — Idle Adjusting .....	43-33 .....	1	1	1	1	1	1
30	Needle Assy — Power Adjusting .....	43-632 .....	1	1	1	1	1	1
31	Needle Assy — Power Adjusting (complete) .....	43-642 .....	1	1	1	1	1	1
32	Packing — Throttle Shaft .....	†44-38 .....	1	—	1	1	1	—
		44-63 .....	—	1	—	—	—	1
33	Packing — Choke Shaft .....	‡44-39 .....	1	1	1	1	1	1
34	Venturi (5/8" Diameter Throat) .....	46-448 .....	1	—	1	1	1	—
	(21/32" Diameter Throat) .....	46-473 .....	—	1	—	—	—	—
	(23/32" Diameter Throat) .....	46-476 .....	—	—	—	—	—	1
35	Nozzle — Main .....	47-257 .....	1	—	1	1	1	—
		47-326 .....	—	1	—	—	—	—
		47-384 .....	—	—	—	—	—	1
36	Jet — Idle .....	49-101-L .....	—	1	—	—	—	1
		49-165 .....	1	—	1	1	—	—
		49-285 .....	—	—	—	—	1	—
37	Jet — Power .....	49-191 .....	—	—	—	1	1	—
		49-196 .....	1	—	1	—	—	—
38	Cup — Throttle Shaft .....	55-230 .....	1	1	1	1	1	1
39	Retainer — Throttle Shaft Packing .....	55-231 .....	1	—	1	1	1	—
40	Retainer — Choke Shaft Packing .....	55-243 .....	1	1	1	1	1	1
41	Pin — Throttle Stop .....	62-167 .....	1	1	1	1	1	1
42	Pin — Choke Stop .....	62-247 .....	—	1	1	1	1	1
43	Plate — Numbering .....	(Specify TSX Number)	1	1	1	1	1	1
44	Fitting & Strainer Assy — Fuel Inlet .....	67-514 .....	1	1	1	1	1	1
45	Washer — Flat, Power Adjusting Needle .....	78-299 .....	1	1	1	1	1	1
46	Plug — Idle Drilling .....	80-171 .....	1	1	1	1	1	1
47	Cotter — Hairpin (Choke Swivel) .....	82-16 .....	1	—	—	—	—	—
48	Cock — Drain .....	87-3A .....	—	1	—	—	—	—
49	Strainer — Fuel Drain .....	*95-40 .....	1	—	1	—	—	—
50	Strainer — Fuel Drain .....	*95-78 .....	1	1	1	1	1	1
51	Plug — Bowl Drain .....	99-7 .....	1	—	1	1	1	1
52	Plug — Expansion, Bowl Drain .....	*179-35 .....	1	—	1	—	—	—
53	Ball — Numbering Plate .....	206-36 .....	1	1	1	1	1	1
54	Body & Shaft Assy — Throttle .....	(See Basic Subassy)	1	1	1	1	1	1
55	Valve & Seat Assy — Float .....	233-536 .....	1	1	1	1	1	1

† Replaced by 44-63. Retainer not required with new packing.

‡ Replaced by 44-66. Retainer not required with new packing.

\* Production previous to July, 1947 used part number 95-40 with part number 179-35. These parts are not replaced with part number 95-78 but are still supplied for service.

